

Kempa

CAMA

VIEW

NO: 5583
STATUS: REC

LAB: KEMPA
TEST: KOURTFLY

MODE

AUTO



SOLES
BY



MICHELIN



2025

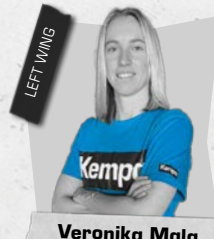
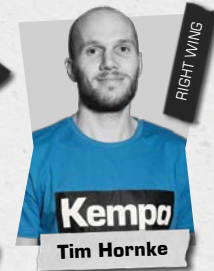
SHOES & BALLS

KPWR

2025

KOURTFLY





KOURTFLY

2 Ultra-Light Breathable Mesh

- natural feel
- efficient moisture transport from the inside to the outside
- maximum comfort

4 Protection Zone

- protects you and your shoe
- enhances the adhesion
- secure grip on the ground even in an extreme incline position



2



4

3

3 For the Planet



The light cushioning consists of 100% ethylene vinyl acetate (20% of which is recycled ethylene vinyl acetate).

1 KPWR

- unique midsole design that absorbs the impact forces and optimally transfers them to the outsole
- secure fit
- highest possible energy return
- perfect stability
- 100% EVA, 20% of which is derived from recycled materials

1

KPWR

Kempa



SOLES BY /  MICHELIN



NEW

COLOUR 04 AVAILABLE FROM 2025

KOURTFLY



Art. 2008672

Size 6-12, 13, 14, 15

Material upper material: textil + 3D-print,
lining: textil, sole: rubber

01 white/blue, 02 blue/white, 04 white/grey



SOLES BY /  MICHELIN



NEW

COLOUR 04 AVAILABLE FROM 2025

KOURTFLY W



Art. 2008673

Size 3,5-10

Material upper material: textil + 3D-print,
lining: textil, sole: rubber

01 white/purple, 03 white/grey





1 KPWR

2 Ultra-Light Breathable Mesh

3 Torsion System

4 Microfiber Reinforcement

5 For the Planet

THE SEAMLESS FUSION OF INNOVATIVE TECHNOLOGY AND MODERN STYLE DEFINES KOURTFLY. THIS SHOE COMBINES OUR STRONGEST FEATURES, INCLUDING KPWR, ULTRA-LIGHT BREATH-MESH, TORSION SYSTEM AND MICROFIBER REINFORCEMENT, CREATING A SHOE DESIGNED FOR HIGH PERFORMANCE ON THE COURT.



SOLES
BY



MICHELIN

KOURTFLY



1 ERGONOMIC SHAPE

- adapted to the natural rolling motion of your feet
- transfers your power to the ground perfectly

2 TORSION SYSTEM

- maximum stability whether during the jump, in the air or during the landing

3 RE-ACTION ZONE

- secure grip during fast changes of direction and dynamic turning movements
- best possible support during agile and explosive movements

4 SOLES BY MICHELIN

- inspired by Michelin motorsport tyres
- specially developed non-staining rubber compound
- integrated directional tread ensures maximum control

SOLES
BY /  **MICHELIN**

Working together with Michelin, we developed an outsole, guaranteeing excellent and durable performance in terms of grip and durability.

More about our cooperation at:
www.kempa-sports.com/en/michelin

02



SOLES
BY /  MICHELIN

01



NEW

COLOUR 02 AVAILABLE FROM 2025

KOURTFLY TWO

Art. 2008674

Size 6-12, 13, 14, 15

Material upper material: textil + 3D-print,
lining: textil, sole: rubber

01 blue/white, 02 white/red



02



SOLES
BY /  MICHELIN

01



NEW

COLOUR 02 AVAILABLE FROM 2025

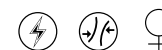
KOURTFLY TWO W

Art. 2008675

Size 3,5-10

Material upper material: textil + 3D-print,
lining: textil, sole: rubber

01 white/grey, 02 white/purple



04



NEW

COLOUR 04 AVAILABLE FROM 2025

KOURTFLY THREE

Art. 2008676

Size 6-12, 13, 14, 15

Material upper material: textil + 3D-print,
lining: textil, sole: rubber

01 blue/white, 04 white/red



01



03



NEW

COLOUR 03 AVAILABLE FROM 2025

KOURTFLY THREE W

Art. 2008677

Size 3,5-10

Material upper material: textil + 3D-print,
lining: textil, sole: rubber

01 white/blue, 03 white/grey



01





06



SOLES BY  MICHELIN



07



01



02



03



NEW

COLOUR 06 & 07 AVAILABLE FROM 2025

KOURTFLY JR

Art. 2008682

Size 34-39 (complete laces)

Material upper material: textil, lining: textil,
sole: rubber

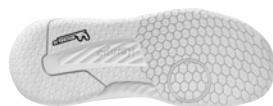
01 white/blue, **02** white/purple, **03** blue/white,
06 white/red/black, **07** white/cyan/purple



06



SOLES
BY /  MICHELIN



07



01



02



03



NEW

COLOUR 06 & 07 AVAILABLE FROM 2025

KOURTFLY KIDS

Art. 2008681

Size 28–33 (velcro closure)

Material upper material: textil, lining: textil,
sole: rubber

01 white/blue, **02** white/purple, **03** blue/white,
06 white/red/black, **07** white/cyan/purple



SOFT FIT

Elastic insock construction for highest comfort.



W I N G

L I G H T N E S S

**ONE OF THE
LIGHTEST
SHOES ON THE
MARKET**



Light ethylene vinyl acetate-cushioning with integrated softpad for the best comfort and excellent shock absorption.

POWER CORE



The light cushioning consists of 100% ethylene vinyl acetate (20% of which is recycled ethylene vinyl acetate).



For more control and improved power transmission.

TORSION PLATE

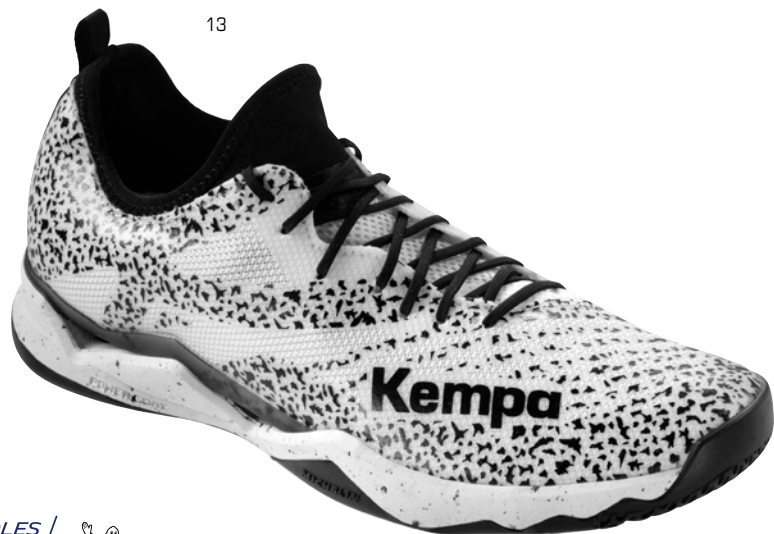
AVAILABLE FROM JUNE 2025

SOLES
BY



MICHELIN

SOLES
BY /  **MICHELIN**



13

NEW

COLOUR 13 AVAILABLE FROM 2025

WING LITE 2.0



Art. 2008520

Size 6-12, 13, 14, 15

Material upper material: textil + 3D-print,
lining: textil, sole: rubber

09 white/deep blue, **11** white, **13** white/black



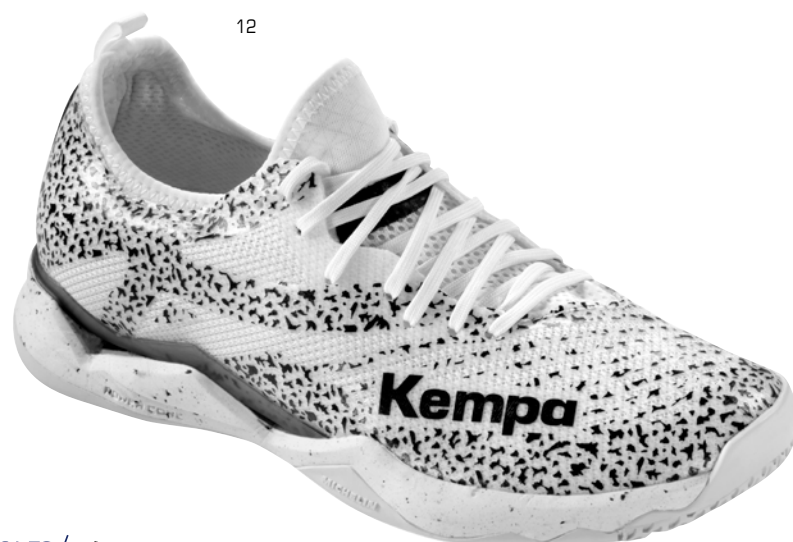
09



11



SOLES
BY /  **MICHELIN**



12

NEW

COLOUR 12 AVAILABLE FROM 2025

WING LITE 2.0 WOMEN



Art. 2008530

Size 3,5-10

Material upper material: textil + 3D-print,
lining: textil, sole: rubber

09 white, **12** white/black



09



09

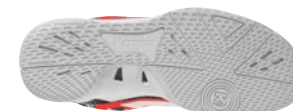


SOLES
BY /  **MICHELIN**

06



08



NEW

COLOUR 09 AVAILABLE FROM JUNE 2025

WING 2.0



Art. 2008540

Size 6-12, 13, 14, 15

Material upper material: textil + 3D-print,
lining: textil, sole: rubber

06 black/red, **08** white/deep blue, **09** white/red/black



06



SOLES
BY /  **MICHELIN**

05



NEW

COLOUR 06 AVAILABLE FROM JUNE 2025

WING 2.0 WOMEN

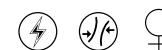


Art. 2008550

Size 3,5-10

Material upper material: textil + 3D-print,
lining: textil, sole: rubber

05 white/aqua, **06** white/cyan/purple



13



SOLES
BY /  MICHELIN



Size 28–33 (velcro closure)



Size 34–39 (complete laces)

NEW

COLOUR 13 AVAILABLE FROM JUNE 2025

WING 2.0 JUNIOR

Art. 2008560

Size 28–33 (velcro closure)
34–39 (complete laces)

Material upper material: textil, lining: textil,
sole: rubber

12 white/deep blue, **13** white/red/black



12



ELECTRIFY



SOLES
BY





SOLES
BY /  MICHELIN



ATTACK MID



Art. 2008670

Size 6-12, 13, 14, 15

Material upper material: textil + thermoplastic polyurethane, lining: textil, sole: rubber

03 black/fluo yellow



SOLES
BY /  MICHELIN



KOURTFLY



Art. 2008672

Size 6-12, 13, 14, 15

Material upper material: textil + 3D-print, lining: textil, sole: rubber

03 black/fluo yellow



SOLES
BY /  MICHELIN



KOURTFLY W



Art. 2008673

Size 3,5-10

Material upper material: textil + 3D-print, lining: textil, sole: rubber

02 white/fluo yellow



02



03



KOURTFLY THREE

Art. 2008676

Size 6–12, 13, 14, 15**Material** upper material: textil + 3D-print,
lining: textil, sole: rubber**02** white/black, **03** black

02



KOURTFLY THREE W

Art. 2008677

Size 3,5–10**Material** upper material: textil + 3D-print,
lining: textil, sole: rubber**02** white/fluo yellow

04



KOURTFLY JR

Art. 2008682

Size 34–39**Material** upper material: textil, lining: textil,
sole: rubber**04** white/fluo yellowSOLES
BY MICHELIN

04



KOURTFLY KIDS

Art. 2008681

Size 28–33**Material** upper material: textil, lining: textil,
sole: rubber**04** white/fluo yellowSOLES
BY MICHELIN

12



SOLES BY  MICHELIN

NEW

WING LITE 2.0



Art. 2008520

Size 6-12, 13, 14, 15

Material upper material: textil + 3D-print,
lining: textil, sole: rubber

12 black/fluor yellow



11



SOLES BY  MICHELIN

NEW

WING LITE 2.0 W



Art. 2008530

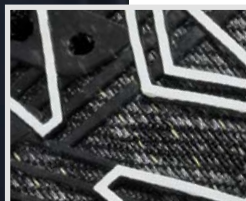
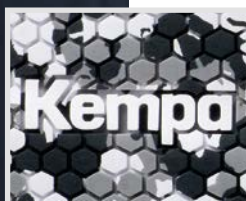
Size 3,5-10

Material upper material: textil + 3D-print,
lining: textil, sole: rubber

11 white/fluor yellow



CONTROL
THE **GAME**



Lukas Stutzke

02



MATRIX

SOLES
BY



01



ATTACK MID



Art. 2008670

Size 6-12, 13, 14, 15

Material upper material: textil + thermoplastic
polyurethane, lining: textil, sole: rubber

01 black, **02** black/white



02



Sneakers with knitted upper



K-FLOAT

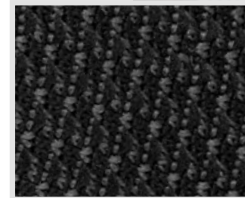
Art. 2008570

Size 3,5–12, 13, 14, 15

Material upper material: textil, lining: textil,
sole: ethylene vinyl acetate + rubber

02 black, **06** marine

CUSTOMIZABLE



Franziska Peter



SPECTRUM

SYNERGY PRO



SYNERGY, the unique handball technology from Kempa.

The innovative production procedure and revolutionary non-slip material improves the roundness and guarantees high form stability.

The result: more **GRIP**, better **FEEL FOR THE BALL**, better **CONTROL**.



BALL-REFINEMENT

CUSTOMIZE YOUR BALL WITH NUMBER, NAME OR LOGO

The logo is printed directly onto the surface of the ball using industrial DTF printing.

Delivery time 10 days from sign-off.

NUMBER

NAME

LOGO



Multi-layered X2 lamination increases the rebound and softness of the ball.

textile lamination provides excellent roundness and supports the stability and robustness.



Surface material with microfiber structure provides optimum grip and excellent ball control.



The latex bladder with textile lamination stops over inflation while minimising air loss.

NEW

01



top matchball with an unique 30-panel-construction

very soft and grippy upper material with Kempa embossing for best grip and outstanding ball control

excellent rebound combined with a soft feel for the ball thanks to the multilayer foam lamination

latex bladder with textile lamination stops over inflation and provides air retention at the same time

suitable for the use of resin

SPECTRUM SYNERGY PRO

Art. 2001918

Size 2, 3

01 cool grey/fluo gelb



**PVC
FREE**

01



excellent match and training ball with a unique 30-panel-construction

soft and grippy upper material with Kempa embossing for best grip and an outstanding ball control

very good rebound combined with a comfortable feel for the ball thanks to the additional foam layer

latex bladder with textile lamination stops over inflation and provides air retention at the same time

suitable for the use of resin

SPECTRUM SYNERGY PLUS

Art. 2001914

Size 0, 1, 2, 3

01 sweden yellow/sweden blue



**PVC
FREE**

NEW

01



top matchball

very soft and grippy upper material with Kempa embossing for best grip and an outstanding ball control

excellent rebound combined with a soft feel for the ball thanks to the concentrated multilayer foam lamination

the latex bladder provides outstanding rebound and air retention at the same time

suitable for the use of resin

BUTEO

Art. 2001919

Size 2, 3

01 orange/black

PVC
FREE

NEW

01



high quality match and training ball with a unique 30-panel-construction

soft and grippy upper material with Kempa embossing for more grip and outstanding ball control

very good rebound with a comfortable feel for the ball thanks to the additional foam layer

latex bladder with textile lamination stops over inflation and provides air retention at the same time

suitable for the use of resin

SPECTRUM SYNERGY PRIMO

Art. 2001920

Size 0, 1, 2, 3

01 black/sweden blue

PVC
FREE

04



high quality match and training ball with a unique 30-panel-construction

soft and grippy upper material with Kempa embossing for more grip and outstanding ball control

very good rebound with a comfortable feel for the ball thanks to the additional foam layer

latex bladder with textile lamination stops over inflation and provides air retention at the same time

suitable for the use of resin

Innovative surface structure made of PU material for unique grip

SYNERGY SPECTRUM PRIMO BLACK & WHITE

Art. 2001890

Size 0, 1, 2, 3

04 black



PVC
FREE

NEW

01



excellent training ball

soft and grippy upper material with Kempa embossing for better grip and very good ball control

very good rebound with a comfortable feel for the ball thanks to the additional foam layer

the latex bladder retains its shape and provides outstanding rebound and air retention at the same time

suitable for the use of resin

GECKO

Art. 2001921

Size 0, 1, 2, 3

01 red/kempablue



PVC
FREE

NEW

02



durable training ball

grippy upper material with Kempa embossing for better grip and ball control

comfortable feel for the ball thanks to the soft foam lamination

the latex bladder retains its shape and provides outstanding rebound and air retention at the same time

suitable for the use of resin

01



03



LEO

Art. 2001922

Size 0, 1, 2, 3

01 fluo yellow/black, 02 orange/black, 03 kempablue/black



PVC
FREE

01

NEW



lightweight training and match ball for children

grippy PU upper material with Kempa embossing for more grip and ball control

comfortable feel for the ball thanks to the soft foam lamination

the latex bladder retains its shape and provides outstanding rebound and air retention at the same time

02



03



TIRO

Art. 2001923

Size Color 01 00
Color 02 0
Color 03 1

01 red/kempablue, 02 fluo yellow/kempablue, 03 kempablue/red



PVC
FREE LITE

04



methodology ball for kids

soft and easy to push handball

grippy upper material

enables better ball control and thus a higher throwing quality

supports children in learning the correct throwing technique

not suitable for dribbling

SOFT GRIP

Art. 2001895

Size

04 fluo yellow/black



02



perfectly suited for use on sand

due to the unique
PVC material, the ball
surface is easy to grip

the contrasting colour gives the ball a strong perception

01



SOFT BEACH

Art. 2001897

Size Color **01** 2
Color **02** 3

01 fluo red, **02** fluo blue



05



durable foam ball

low risk of injury

suitable for children

suitable for school sports and recreation

SOFT

Art. 2001894

Size one size

05 ice grey/fluo orange



01



Plush ball in handball design

very light and soft

SOFT KIDS

Art. 2001896

Size one size

Material 100% polyester

01 kempablue/fluo yellow



02



weighted ball (600gr)

good grip, durable

TRAINING 600

Art. 2001823

Size 2

02 fluo yellow

PVC
FREE

02



weighted ball (800gr)

good grip, durable

TRAINING 800

Art. 2001824

Size 3

02 fluo yellow

PVC
FREE

Baden[®]

EVERY GAME STARTED WITH A BALL.
A BALL IS AN INVITATION TO PLAY.



OFFICIAL BALL PARTNER

orange



official easyCredit BBL match ball

advanced microfibre leather

Cushioned Control Technology (CCT)

symmetrical Panel System

recessed Stealth Valve



NEW

ELITE PRO EASYCREDIT BBL

Art. 303002807 orange

Size 7

orange



with official easyCredit BBL logo

the Crossover's flex composite cover has the soft, tacky feeling of a high-end game ball with added durability for all surface play, great for indoor/outdoor play

Crossover has our unique symmetrical panel construction



NEW

CROSSOVER EASYCREDIT BBL

Art. 303002907 orange

Size 7

orange



with official easyCredit BBL logo

deluxe rubber with recessed channels

extremely durable



NEW

BASIC EASYCREDIT BBL

Art. 303003005 orange

Size 5

Art. 303003007 orange

Size 7

orange



with official easyCredit BBL logo

high-quality rubber, ideal for autographs

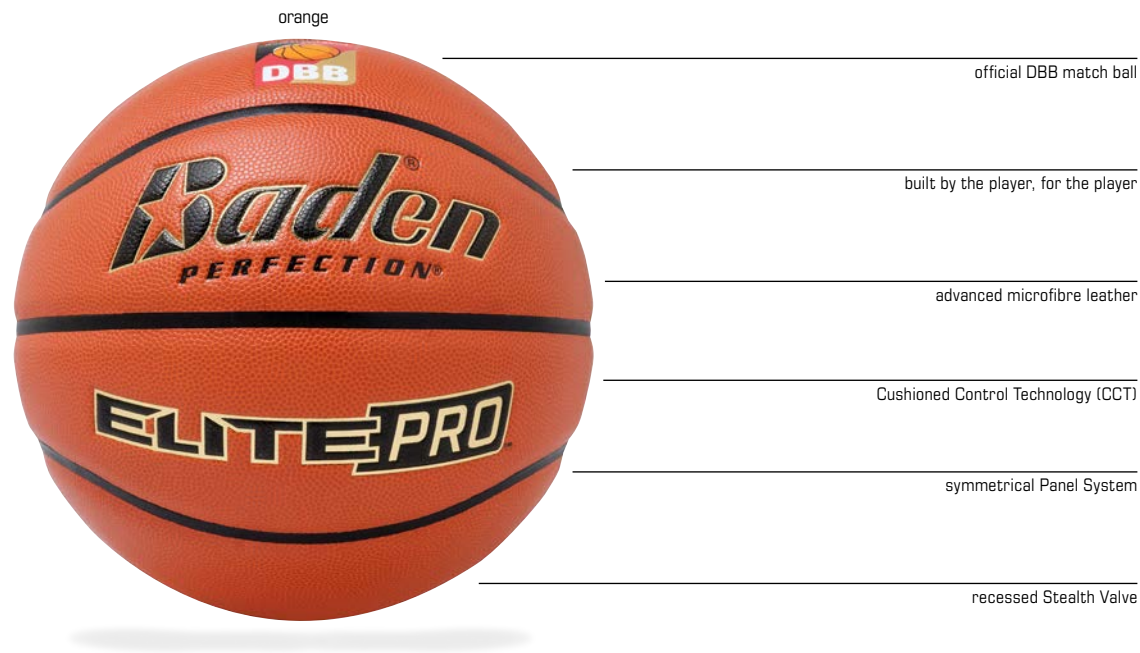


NEW

MINI EASYCREDIT BBL

Art. 303003101 orange

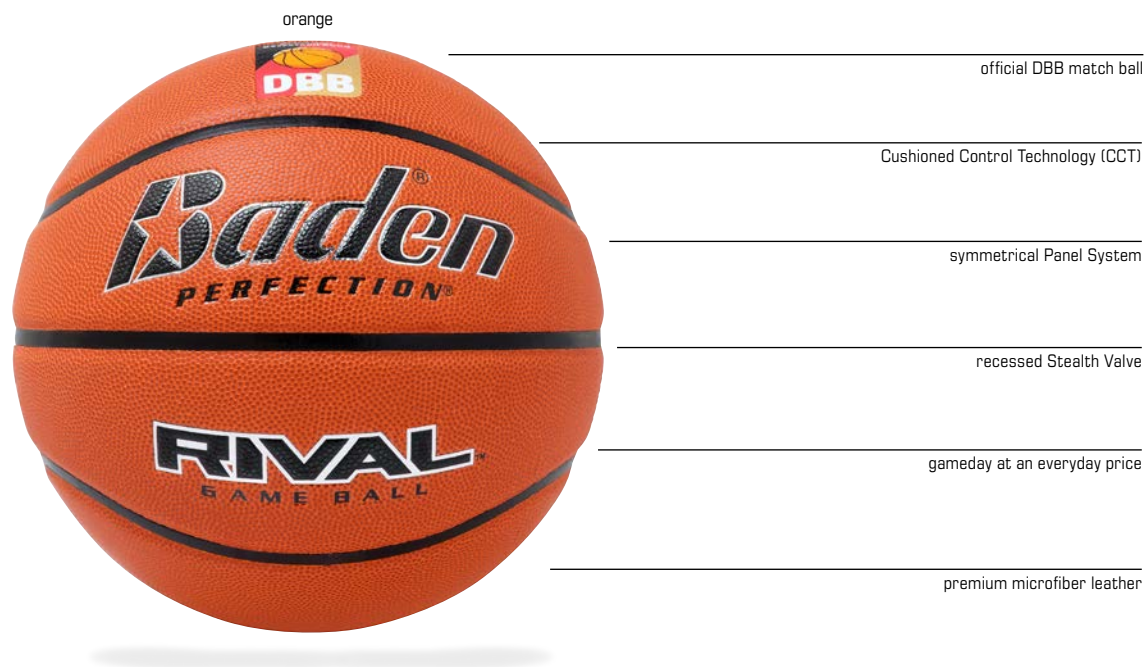
Size 1



NEW

ELITE PRO DBB

Art. 303002306 orange Size 6
Art. 303002407 orange Size 7



NEW

RIVAL DBB

Art. 303002505 orange Size 5
Art. 303002606 orange Size 6
Art. 303002707 orange Size 7

orange



built by the player, for the player

advanced microfibre leather

Cushioned Control Technology (CCT)

symmetrical Panel System

recessed Stealth Valve

ELITE PRO NFHS

Art. 303000106	orange	Size 6
Art. 303000107	orange	Size 7

orange



Cushioned Control Technology (CCT)

symmetrical Panel System

recessed Stealth Valve

gameday at an everyday price

premium microfiber leather

RIVAL NFHS

Art. 303000205	orange	Size 5
Art. 303000206	orange	Size 6
Art. 303000207	orange	Size 7

orange



the Crossover's flex composite cover has the soft, tacky feeling of a high-end game ball with added durability for all surface play, great for indoor/outdoor play

Crossover® has our unique symmetrical panel construction

black/orange



CROSSOVER

Art. 303000405	orange	Size 5
Art. 303000406	orange	Size 6
Art. 303000407	orange	Size 7
Art. 303000505	black/orange	Size 5
Art. 303000506	black/orange	Size 6
Art. 303000507	black/orange	Size 7

grey/black



deluxe rubber with recessed channels

extremely durable

orange



purple/yellow



LEGEND

Art. 303003505	grey/black	Size 5
Art. 303003506	grey/black	Size 6
Art. 303003507	grey/black	Size 7
Art. 303000805	purple/yellow	Size 5
Art. 303000806	purple/yellow	Size 6
Art. 303000807	purple/yellow	Size 7
Art. 303000905	orange	Size 5
Art. 303000906	orange	Size 6
Art. 303000907	orange	Size 7

orange



deluxe rubber with recessed channels

extremely durable

red/white



black/white



blue/white



white/red/royal



BASIC

Art. 303001005	orange	Size 5
Art. 303001006	orange	Size 6
Art. 303001007	orange	Size 7
Art. 303001605	red/white	Size 5
Art. 303001606	blau/white	Size 6
Art. 303001607	black/white	Size 7
Art. 303001705	white/red/royal	Size 5
Art. 303001706	white/red/royal	Size 6
Art. 303001707	white/red/royal	Size 7

grey/red



extremely durable

indoor / outdoor basketball

durable rubber construction

precise hand positioning guides

for both left and right handed shooters

SKILL SHOOTER

Art. 303002205	grey/red	Size 5
-----------------------	----------	--------

white/fluo green/green



cushioned synthetic leather cover

precision stitched

premium bladder for maximum air retention

white/orange/pink



white/red/black



NEW

MATCH POINT BEACH

Art. 303003605 white/fluo green/green Size 5

Art. 303003705 white/orange/pink Size 5

Art. 303003805 white/red/blue Size 5

orange



the cushioned composite cover provides a soft and tacky feel that's great right off the shelf

grippy laces help increase the ball's spin rate for more accuracy to the receiver

ideal for indoor or outdoor play

NEW

QB AMERICAN FOOTBALL

Art. 303004208 orange Size 6

Art. 303004207 orange Size 7

Art. 303004209 orange Size 9

Baden[®]

KEMPA X BADEN

A BALL IS MORE THAN JUST A PIECE OF EQUIPMENT – IT'S AN INVITATION TO EXPERIENCE SPORTS TOGETHER. EVERY GAME BEGINS WITH A BALL.

BADEN develops balls that enable players to perform at their highest level. Their goal: to create the best balls, with full dedication and passion for the sport. Like the athletes themselves, BADEN strives to push boundaries and continuously improve the playing experience.

Since their founding, they have been pioneers in basketball in the USA. With heartfelt dedication, they develop balls that players love and appreciate – balls that elevate the game. One example of their commitment is the development of the women's size basketball, highlighting BADEN's dedication to community, equality, and teamwork.

Sport inspires us, makes us dream, take risks, and believe in ourselves. BADEN lives this passion and is committed to continuously perfecting the game and its balls.



uhlsport group

Germany, Austria, Switzerland

Germany

uhlsport GmbH
Klingenbachstrasse 3
72336 Balingen
Phone +49 7433 268-0
Fax +49 7433 268-194
Web uhlsport.group
Mail info@uhlsport.com

Austria

uhlsport GmbH
Thomas Steingreß
Forchtenau 37
AUT 4971 Auroldmünster
Phone +43 6645 324656
Web uhlsport.group
Mail tsteingress@uhlsport.com

Switzerland

uhlsport Schweiz
Peter Eggimann
Dorfstraße 19
CH 3465 Dürrenroth
Phone +41 7964 55502
Mail peggimann@uhlsport.com

France

uhlsport France

Zone Athélia 2, 170 Impasse du Serpolet
FR 13704 La Ciotat Cedex
Phone +33 4420 88030
Web uhlsport.group/uhlsport-france
Mail uhlsportfr@uhlsport.fr

Spain

uhlsport Ibérica 2006 S.A.

Parque Tomás Caballero nº2
planta 5ª, oficina 8
EDIFICIO FUERTE EL PRINCIPE I
ES 31006 Pamplona - Navarra
Phone +34 9482 06535
Web uhlsport.group/uhlsport-iberica
Mail info@uhlsport-iberica.com

UK

uhlsport UK

David Sanderson
Country Manager
Phone +44 (0) 7939 583876
Mail dsanderson@uhlsport.com
Julie Holtom
Customer Service Representative UK
Phone +44 (0) 1993 228708
Web uhlsport.group/uhlsport-uk
Mail julie@uhlsportuk.com

Sweden

uhlsport Scandinavia AB

Ståhlbergsvägen 13
SE 63221 Eskilstuna
Phone +46 1612 8860
Web uhlsport.group/uhlsport-scandinavia
Mail sweden@kempa-handball.com

Benelux

uhlsport Benelux

Engelse Wandeling 2, K1G
BE 8500 KORTRIJK
Phone +32 5622 4046
Mail alain@uhlsport.be
david@uhlsport.be
sebastien.deketelaere@uhlsport.com
manuel.kremer@uhlsport.com
Web uhlsport.group/uhlsport-benelux

International Sales

If you have questions/inquiries for international markets,
please contact **internationalsales@uhlsport.de**



Shoesize

	KIDS															ADULTS														
EUROPE	28	29	30	31	32	33	34	35	36	37	37½	38	38½	39	39½	40½	41	42	42½	43	44	44½	45	45½	46	47	48	49	50	
USA	10	11	12	13	1	1½	2½	3	4	4½	5	5½	6	6½	7	7½	8	8½	9	9½	10	10½	11	11½	12	12½	13½	14½	15½	
UK	10	10½	11½	12½	13½	1	2	2½	3½	4	4½	5	5½	6	6½	7	7½	8	8½	9	9½	10	10½	11	11½	12	13	14	15	
JAPAN	16½	17½	18	18½	19	20	21	21½	22½	23	23½	23,7	24	24,5	25	25½	26	26½	27	27½	28	28½	29	29½	30	30½	31	32	33	

Handballs IHF Standard

Age group	Age	Handball Size
Bambinis	under 6 years	00 (unofficial size)
Minis	ca. 6 – 8 years	0 (unofficial size)
Female youth: C, D, E	8 – 14 years	1
Male youth: D, E	8 – 12 years	1
Female youth: A, B	14 years and older	2
Male youth: C, B	12 – 16 years	2
Male youth: A	16 years and older	3
Men	18 years and older	3

Index Shoes & Balls

Art.	Name	Page	Art.	Name	Page	Art.	Name	Page
2008520	WING LITE 2.0	13, 19	2001823	TRAINING 600	29	303002807	ELITE PRO EASYCREDIT BBL	31
2008530	WING LITE 2.0 WOMEN	13, 19	2001824	TRAINING 800	29	303002907	CROSSOVER EASYCREDIT BBL	31
2008540	WING 2.0	14	2001890	SYNERGY SPECTRUM PRIMO BLACK & WHITE	25	303003005 / 07	BASIC EASYCREDIT BBL	31
2008550	WING 2.0 WOMEN	14	2001894	SOFT	28	303003101	MINI EASYCREDIT BBL	31
2008560	WING 2.0 JUNIOR	15	2001895	SOFT GRIP	27	303002306 / 2407	ELITE PRO DBB	32
2008570	K-FLOAT	21	2001896	SOFT KIDS	28	303002505 / 606 / 707	RIVAL DDB	32
2008670	ATTACK MID	17, 20	2001914	SPECTRUM SYNERGY PLUS	23	303000106 / 07	ELITE PRO NFHS	33
2008672	KOURTFLY	5, 17	2001918	SPECTRUM SYNERGY PRO	23	303000205 / 06 / 07	RIVAL NFHS	33
2008673	KOURTFLY WOMEN	5, 17	2001919	BUTEO	24	303000405 / 06 / 07	CROSSOVER	34
2008674	KOURTFLY TWO	8	2001920	SPECTRUM SYNERGY PRIMO	24	303000505 / 06 / 07	CROSSOVER	34
2008675	KOURTFLY TWO WOMEN	8	2001921	GECKO	25	303003505 / 06 / 07	LEGEND	34
2008676	KOURTFLY THREE	9, 18	2001922	LEO	26	303000805 / 06 / 07	LEGEND	34
2008677	KOURTFLY THREE WOMEN	9, 18	2001923	TIRO	26	303000905 / 06 / 07	LEGEND	34
2008681	KOURTFLY KIDS	11, 18	2001997	SOFT BEACH	27	303001005 / 06 / 07	BASIC	35
2008682	KOURTFLY JR	10, 18				303001605 / 06 / 07	BASIC	35
						303001705 / 06 / 07	BASIC	35
						303002205	SKILL SHOOTER	35
						303003605 / 705 / 805	MATCH POINT BEACH	36
						303004207 / 08 / 09	QB AMERICAN FOOTBALL	36

Imprint

uhlsport GmbH
Klingenbachstraße 3
72336 Balingen
Germany

Tel: +49 7433 268-0
Fax: +49 7433 268-194
E-Mail: info@uhlsport.com

Visit us on



kempa-sports.de

Photography: Marc Schäfer Photography

The artwork in this catalogue was obtained from the following sources:

AFI Andreas Fischer
Alexander Mader
Sascha Klahn
ninostrauch
Marc Fippel Fotografie
Martin Deuring
Janice Bucker
Philippe Riou
Gerd Hofele – FRISCH AUF!
Göppingen Management & Marketing GmbH
Beks Photographer
VS Photographer

Marie-Louise Vestergaard Stadel
Madsen
Jonas Fangel
Sven Kuehne/Stofftacker
VITTA GALLERY
Karlien van der Geest
Boudewijn Benting
Club Balonmano Cangas
SCDR ANAITASUNA
metz hb
Österreichischer Handball
Verband
Kolektiff Krim Mercator Ljubljana

Subject to technical modifications, misprints, errors and price revisions.
Colours may appear different in print from the original colours. All prices quoted are manufacturer's recommended prices. Any copying or reproduction of any part of this catalogue is only allowed with the expressed permission of Kempa®. January 2025.

**Supplies are limited.

In the interest of better readability, we refrain from using both the masculine and other forms in the absence of gender-NEUTRAL wording. The chosen masculine formulations therefore apply without restriction to the other genders as well.



Our main catalogs are produced using an innovative UV printing solution to improve recyclability. Thanks to a new series of inks, the printing color can be more easily removed during the recycling process, enabling an optimal circular economy.

The paper used for printing, Soporset Premium Offset, meets the paper specification OCR (ISO 1831:1980), offers high opacity and volume, and is certified with the EU Ecolabel and FSC®.



Kempa



KPWR

2025

KOURTFLY



CAMA

VIEW

NO: 5583
STATUS: REC

LAB: KEMPA
TEST: KOURTFLY

MODE

AUTO



SOLES
BY



MICHELIN



2025

SHOES & BALLS

